

## CASE STUDY



# Sustainability project leader drives value with Bingle's AI and CLM



“The main Bigle feature we use is **contract management**, which allows us to efficiently handle our own and third-party documents, enabling us to understand better, review, and negotiate them. Additionally, we rely on the legal AI assistant, Bigle Libra, which helps us with document drafting.”



**JAIME ALONSO ÁLVAREZ**  
Legal Manager, Euro-Funding







**COMPANY:**

**EURO-FUNDING**

Leaders in securing public funding, generating tax savings, and developing sustainable projects.



**WEBSITE:**

<https://euro-funding.com/en/>



**INDUSTRY:**

Consultancy and services for businesses.



**COUNTRY:**

Spain



**SERVICE AREA:**

Global



**NUMBER OF EMPLOYEES:**

201-500



**SOCIAL MEDIA:**



[LinkedIn](#)



[YouTube](#)



[X](#)



A large, glowing 'AI' logo is centered on a dark, textured background that resembles a complex circuit board or a digital network. The background is filled with blue and purple light trails, suggesting data flow and connectivity. The 'AI' logo itself is white with a slight glow, set within a dark, rounded square.

# AI

“Bigle provides us with added value in our dealings with clients, allowing us to streamline processes and enabling the legal department to focus more on legal matters rather than administrative tasks.”



**JAIME ALONSO ÁLVAREZ**  
Legal Manager, Euro-Funding







## Company profile

Euro-Funding is a Spanish company with **a global service that assists its clients in:**

- The search for and securing of **public funding for innovative projects.**
- The generation of **tax savings** and the development of **sustainable projects.**
- **The optimisation of foreign VAT,** corporate tax, and property-related taxation (such as IBI, IAE, among others).

Additionally, **Euro-Funding supports companies by analysing production processes and creating a plan to reduce environmental impact,** as well as designing tailored solutions adapted to each client's reality, resulting in a high economic, social, and environmental impact.

Euro-Funding has a **team of over 250 professionals across Europe and international markets.**

**For more than 20 years,** they have been working with their clients to design personalised financing strategies.

As a result, Euro-Funding has established itself as a **leader in securing public funding, generating tax savings, and developing sustainable projects.**

The company has over 10 offices across Spain, **serving large corporations and industrial groups.** They also support the business fabric and knowledge generation of SMEs, startups, technology centres and universities, among others, which enables them to manage opportunities better.

**Euro-Funding is committed to sustainability** at a strategic level with a long-term vision.



"On a personal level, I highlight Bingle's effective communication, their approachable manner, and quick response times."



**JAIME ALONSO ÁLVAREZ**  
Legal Manager, Euro-Funding



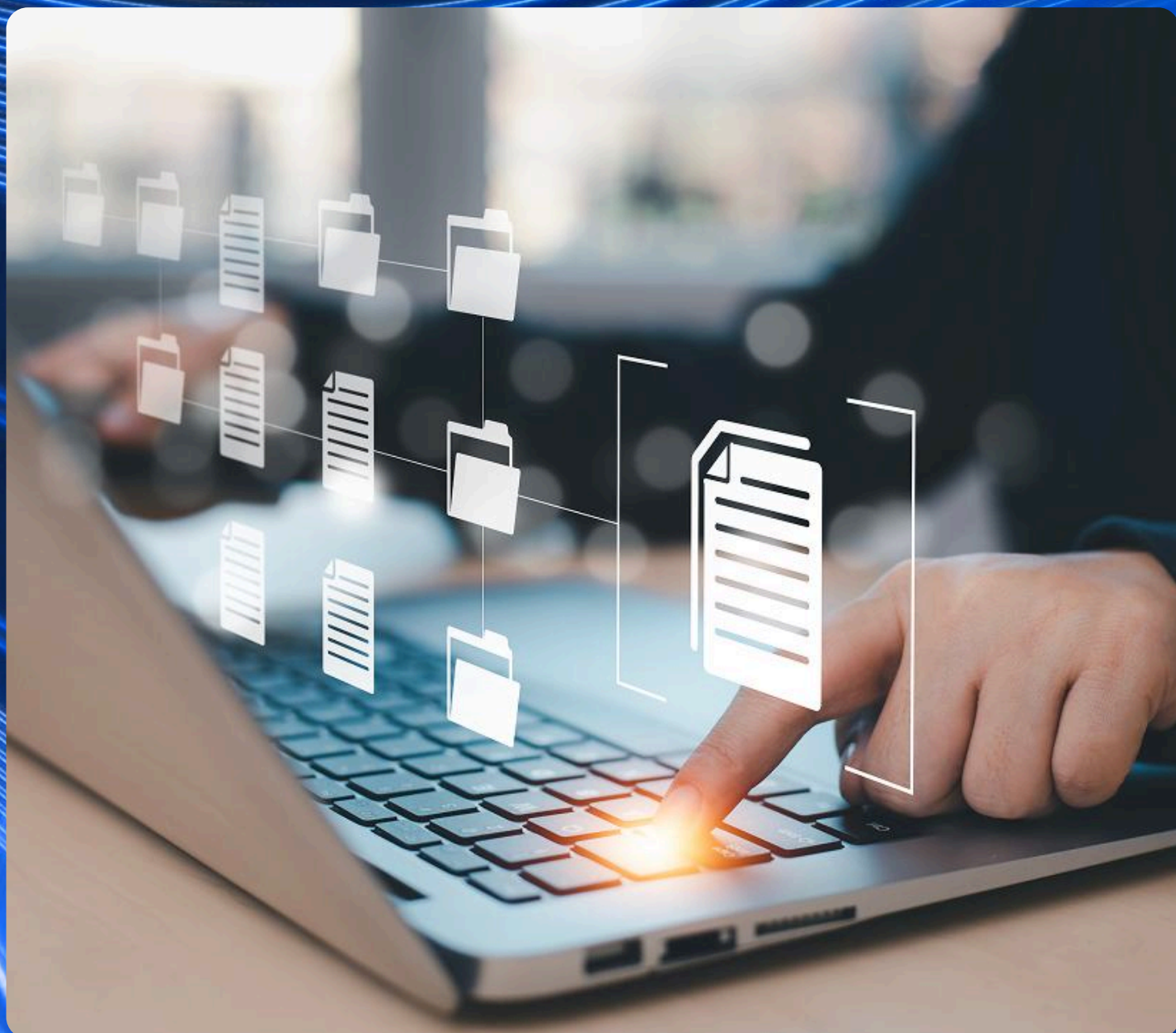




# The challenge

Euro-Funding faced two major challenges:

1. Managing a **high volume of contracts** prevented the legal department from focusing on activities where they could be more strategic for the company, thereby providing greater added value rather than simply inputting data into templates.
2. They were also facing the problem of **using outdated documents**.



"On the technical side, I value Bingle's ease of use, unlike other tools I tried before deciding which one to work with, as well as the added value it brings to my work and my department."



**JAIME ALONSO ÁLVAREZ**  
Legal Manager, Euro-Funding







## The path to success

In an effort to address the challenges faced by the legal department, **the team conducted an active online search** and thoroughly evaluated six platforms, ultimately choosing Bingle for the following reasons:

- **Quick** response times.
- **Ease of use** of the platform.
- **Competitive pricing.**
- **Commitment to technology** and continuous improvement of the platform.

Euro-Funding highlights that **the technical onboarding process of the tool was relatively straightforward**, despite the complexity of some of their contracts, which contain various variables.

Regarding the integration of the platform at the team level, they note that **the main challenge was resistance to change within the company**. Previously, the sales team was allowed to access contracts but not edit them; now, they are responsible for entering the data. **Currently, the only valid documents are those generated using the pre-established standards within the platform.**

Euro-Funding **required three months from the kick-off to the tool's go-live, including data loading and other preparations, to begin using the platform independently.** They highlight the speed of adoption on their part, as the adaptation was carried out in line with mutually agreed criteria.

# PLATFORM IMPLEMENTATION AND ADOPTION ROADMAP



**1.** Search for legal tech solutions on the internet.



**2.** Evaluation of the 6 most competitive and highly rated legal tech solutions.



**3.** Decision to work with Bigle due to its quick response to queries, ease of use, competitive pricing, and continuous platform improvement.



**4.** Initial resistance to change from the sales team.



**5.** Resistance to change was resolved through document automation on the Bigle platform.



**6.** 3 months to adopt the platform independently.



**7.** Smooth integration of the Bigle platform into the Euro-Funding team.



"We only needed three months from the kick-off to the tool's go-live to start using it independently."



**JAIME ALONSO ÁLVAREZ**  
Legal Manager, Euro-Funding





# Results

The main solution used by Euro-Funding's legal team is the contract management feature, which allows them to efficiently manage their own documents as well as those of third parties. This enables them to better understand, review, and negotiate contracts, **supported by the legal AI assistant, Bigne Libra, which helps in this process by providing tailored solutions for drafting.**

The company highlights the added value that Bigne has provided for their clients, allowing processes to be **streamlined and enabling the legal department to focus on more legal matters rather than administrative tasks.**

Additionally, Euro-Funding points out that the results have been very satisfactory in relation to:



The reduction of the risk of **human errors.**



**Agility and accuracy** in updating various contracts due to regulatory changes.



Documents encrypted with **full security**, from start to signature.



Efficiency in **managing requests** within the legal department.



Translation of documents into **multiple languages.**



Esta frase queda: The speed provided by a contract process that is open 24/7/365 results in **time savings**: the legal department saves at least one to two hours daily per person.



“We feel confident using Bingle because the correct and up-to-date templates are always used. We have the peace of mind knowing that outdated templates are not used, nor are documents negotiated without authorisation.”



**JAIME ALONSO ÁLVAREZ**  
Legal Manager, Euro-Funding



# About Bigle

Bigle is a legal tech company that offers a software suite with 4 products: Bigle CLM, the legal AI Bigle Libra, Bigle Sign and Bigle Academy. The company's mission is to **streamline the legal operations of companies, improving security and minimising the risk of legal contingencies.**

The platform allows professionals to automatically create documents, share them for review, validate them in real-time, collaborate virtually, negotiate and has its own electronic signature.

**Bigle has developed a generative artificial intelligence assistant, Libra, which is connected to its CLM platform, developed for legal departments, which is an expert in the legal field and offers a secure environment of maximum confidentiality, minimising the hallucinations typical of other generalist tools.**

The technology company is a pioneer and leader in the field of no-code document automation, has a global presence and its clients include large corporations and large law firms.

To learn more about Bigle, visit the website: [biglelegal.com](https://biglelegal.com)

For other enquiries, please contact [communication@biglelegal.com](mailto:communication@biglelegal.com)

## By using Bigle, you contribute to saving natural resources



**323 million**  
kg of wood



**7.1 billion**  
litres of water



**725 million**  
kg of CO<sub>2</sub>



**47 million**  
kg of waste